

(松代病院)

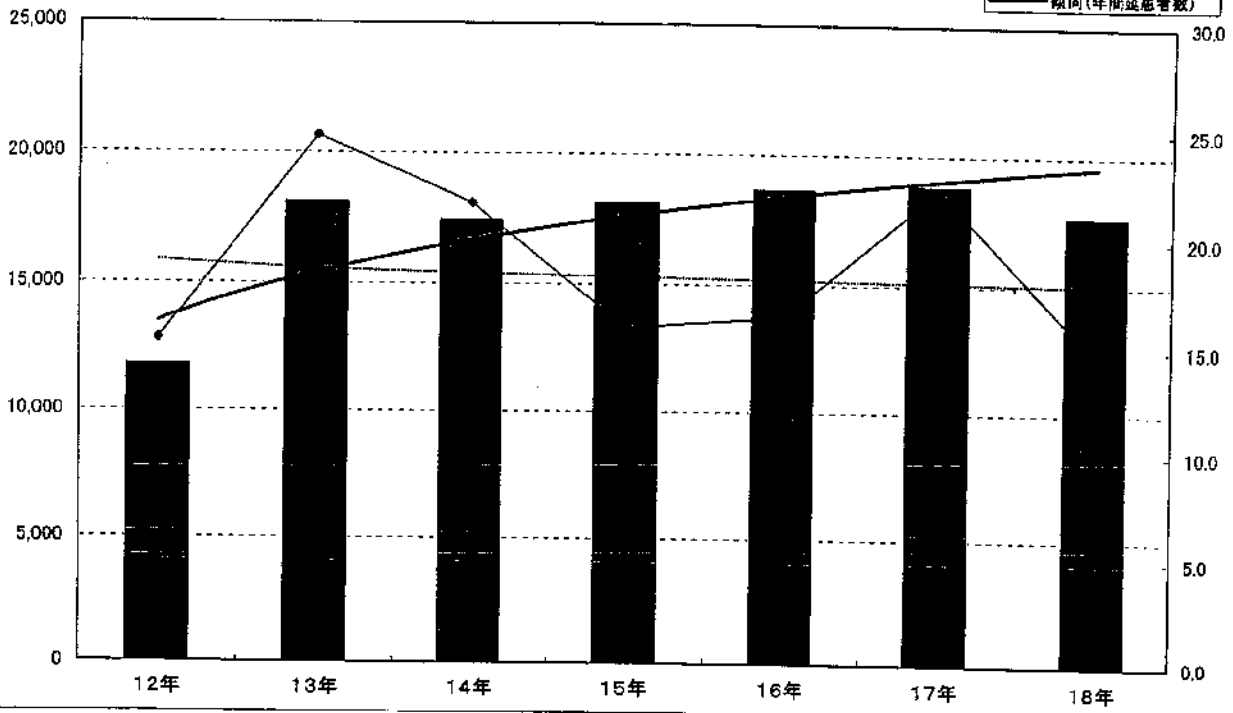
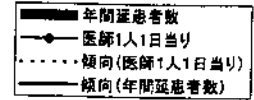
診療科目別の現状

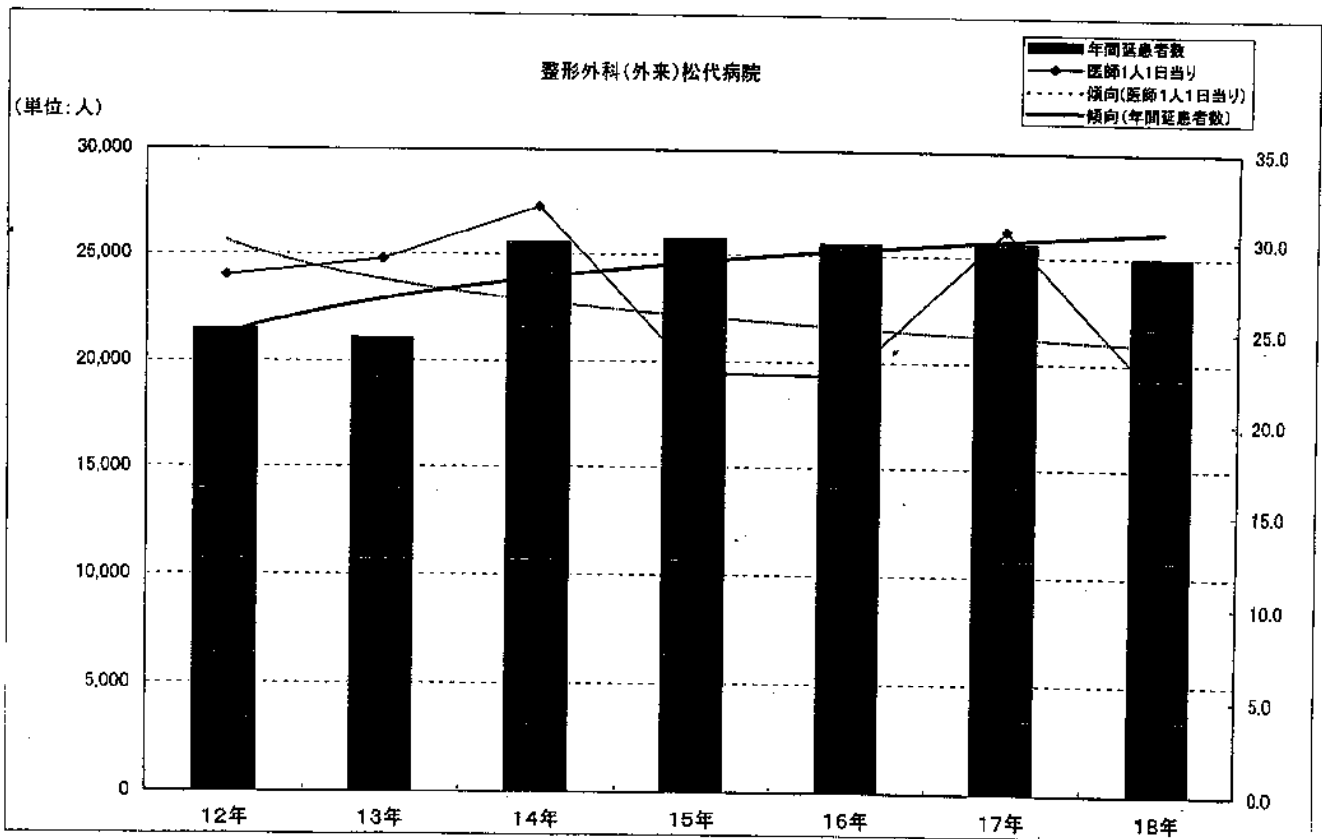
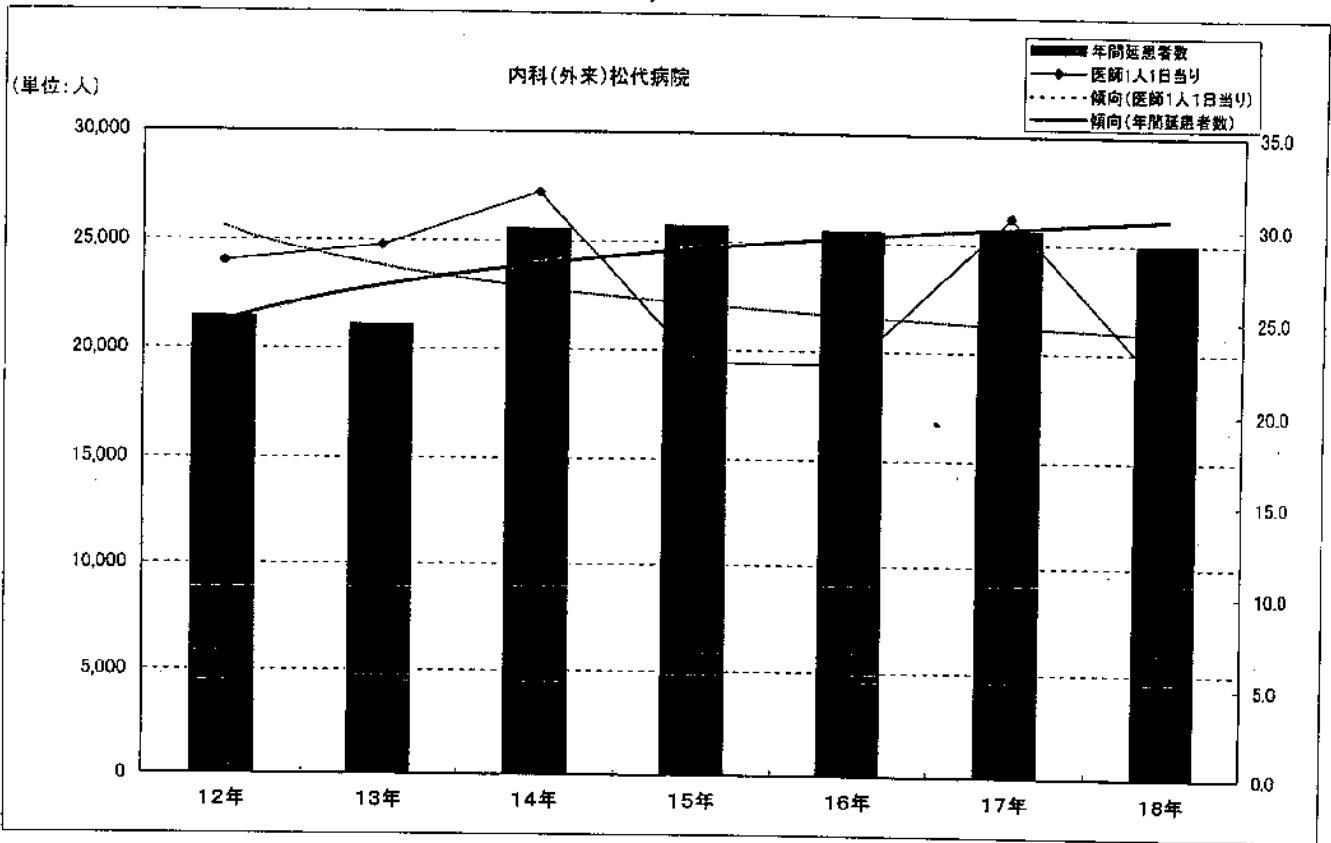
(内容)

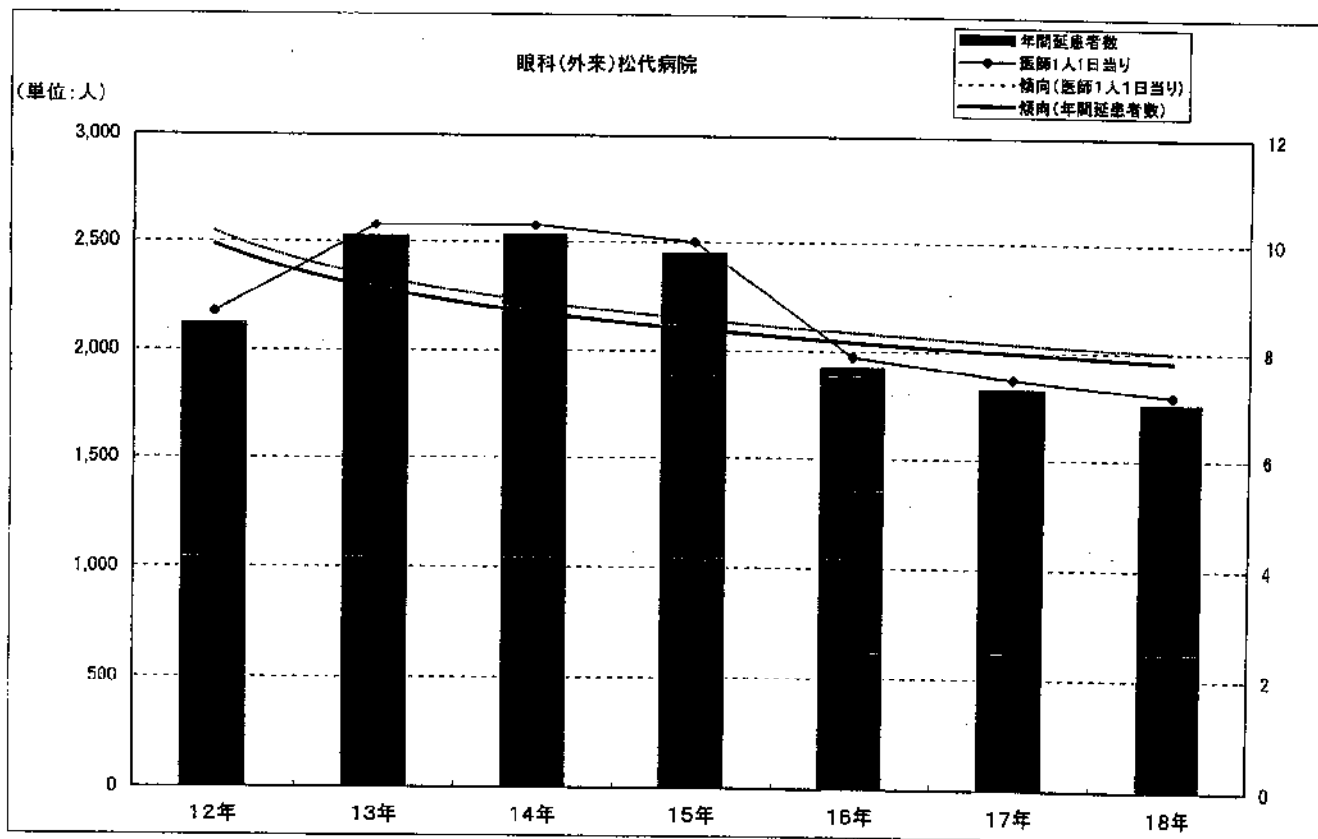
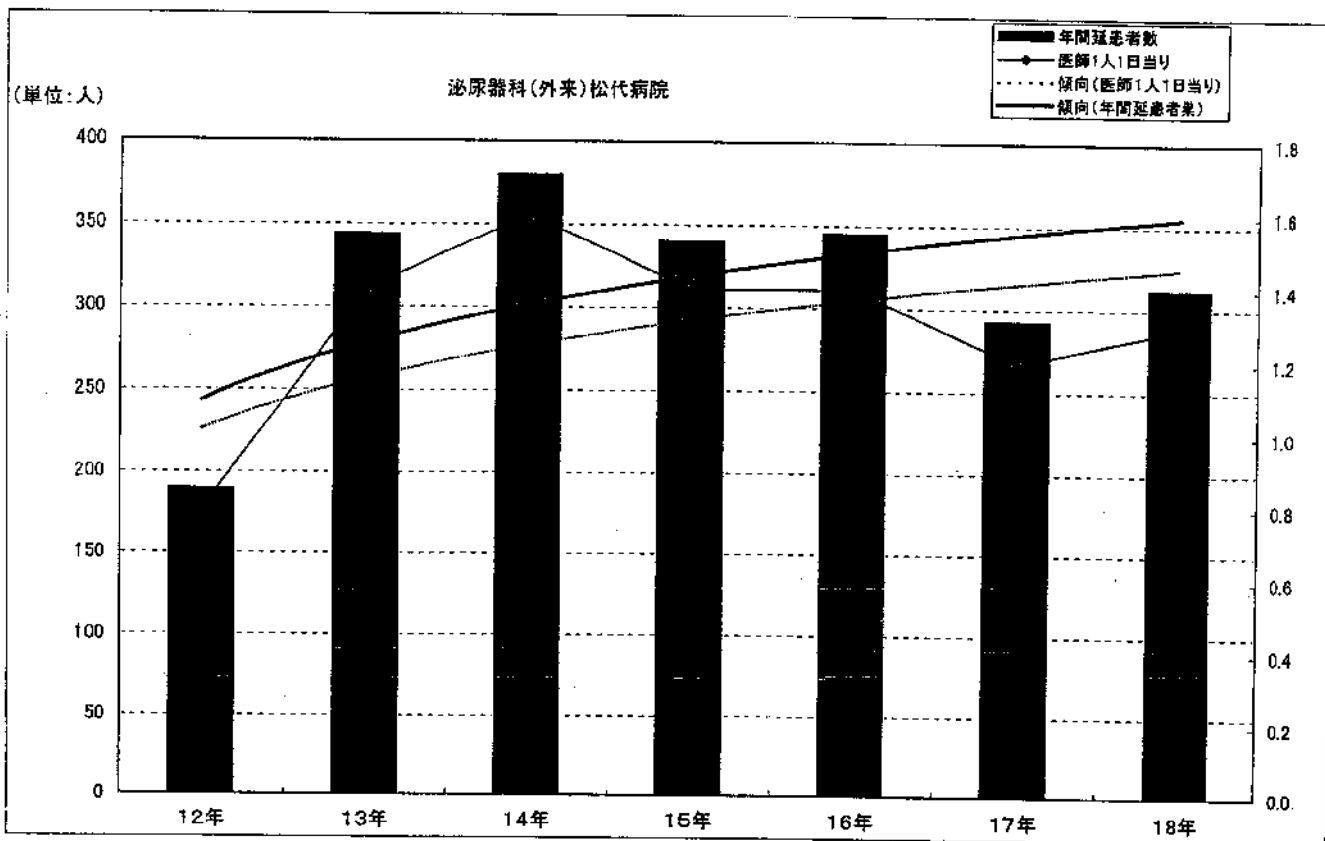
- ・ 診療科目別・年間延患者数 (入院) . . . . . P 1
- ・ 診療科目別・年間延患者数 (外来) . . . . . P 2～
- ・ 診療科目別・1日の患者数 (入院) . . . . . P 5～
- ・ 診療科目別・1日の患者数 (外来) . . . . . P 6～

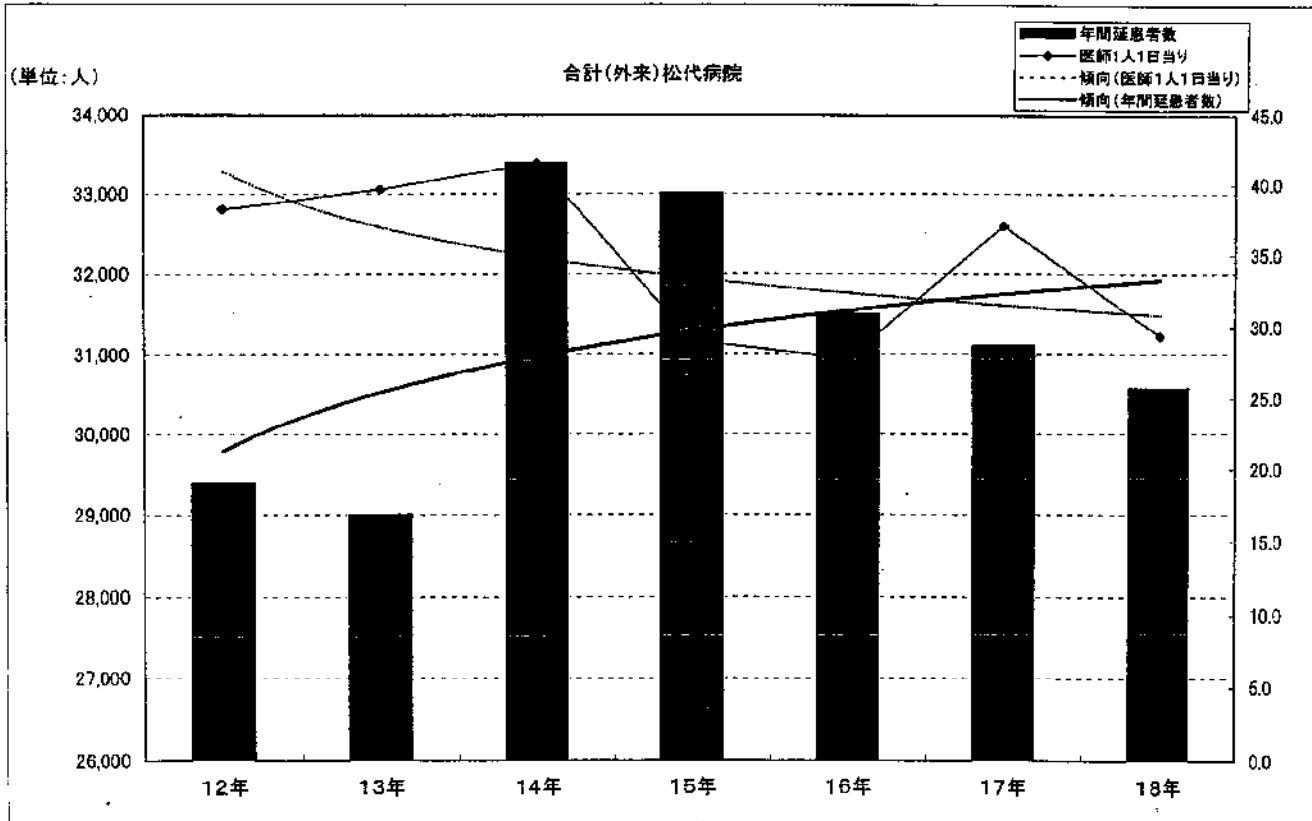
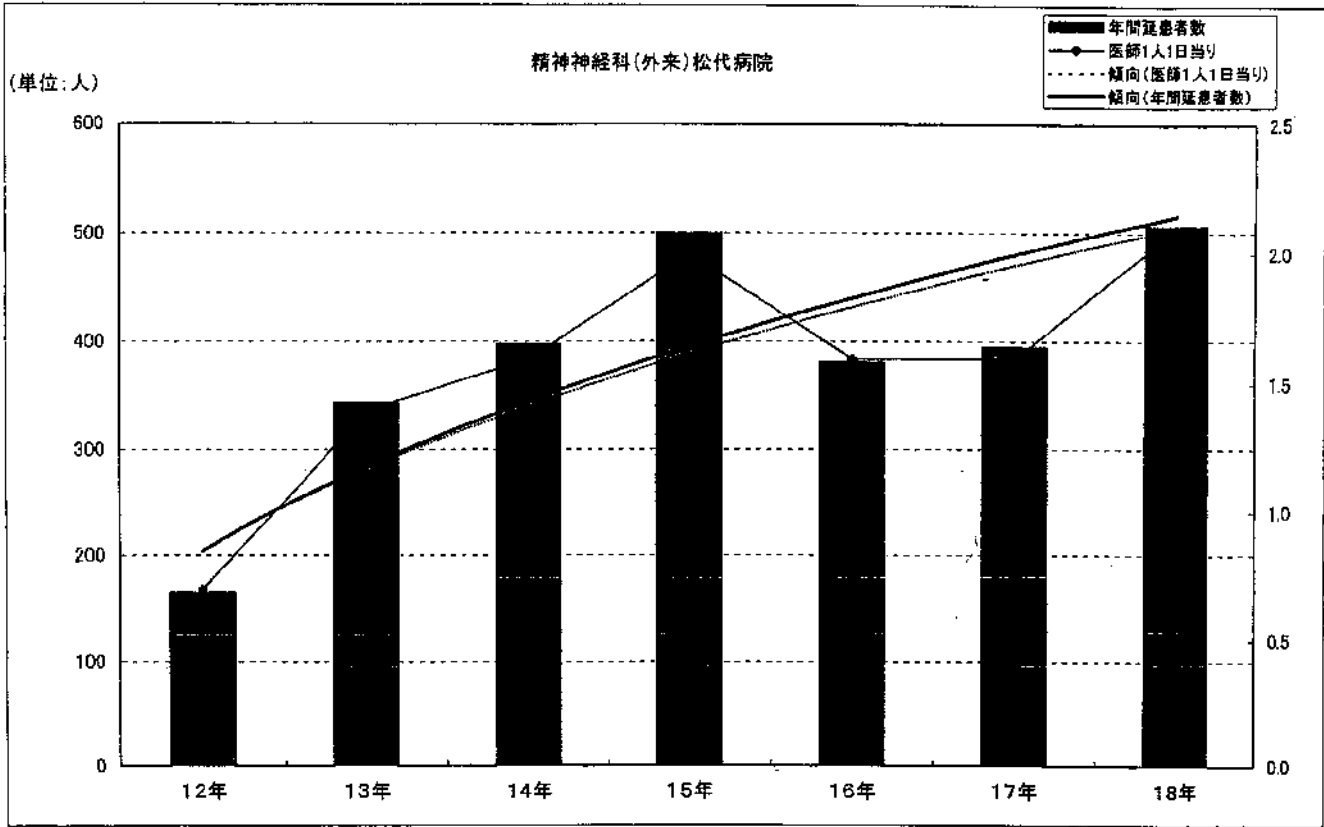
内科(入院)松代病院

(単位:人)



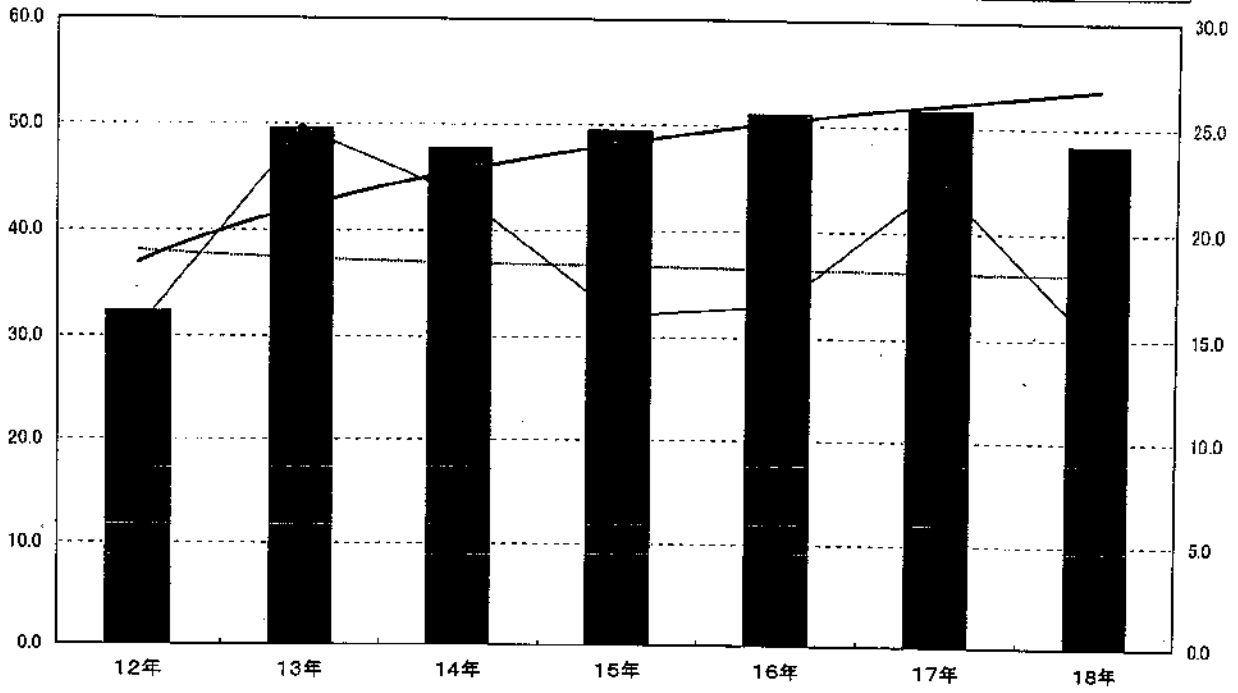
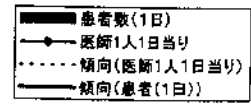






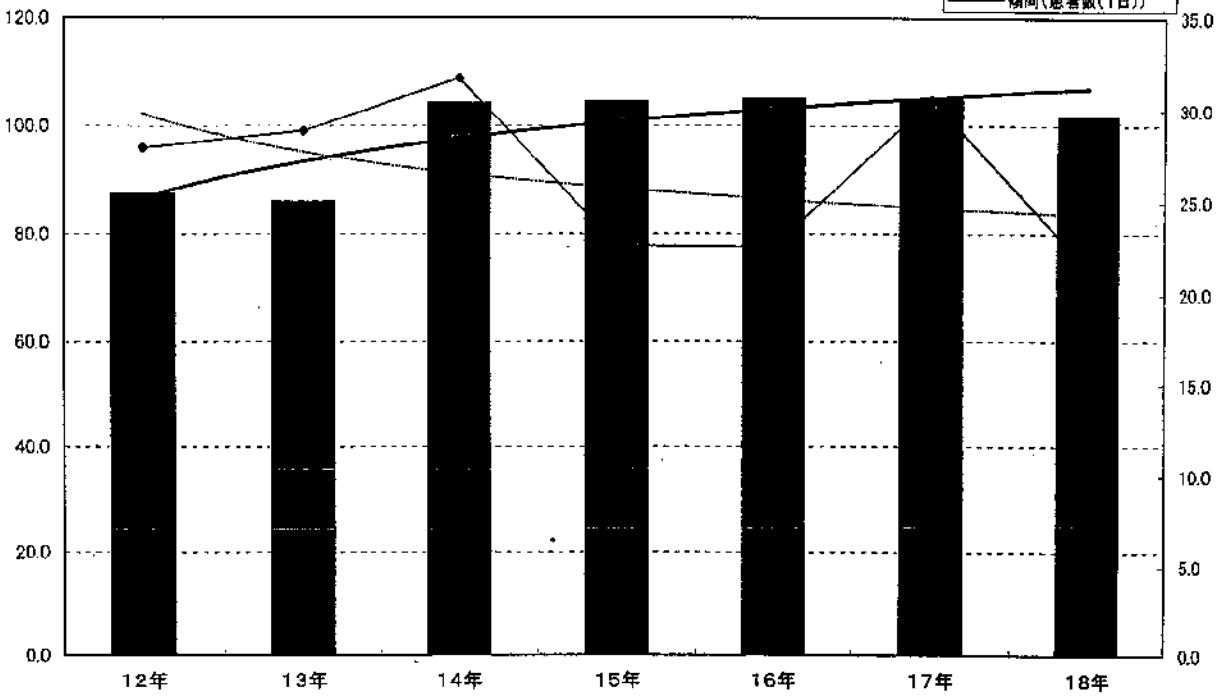
内科(入院)松代病院

(単位:人)



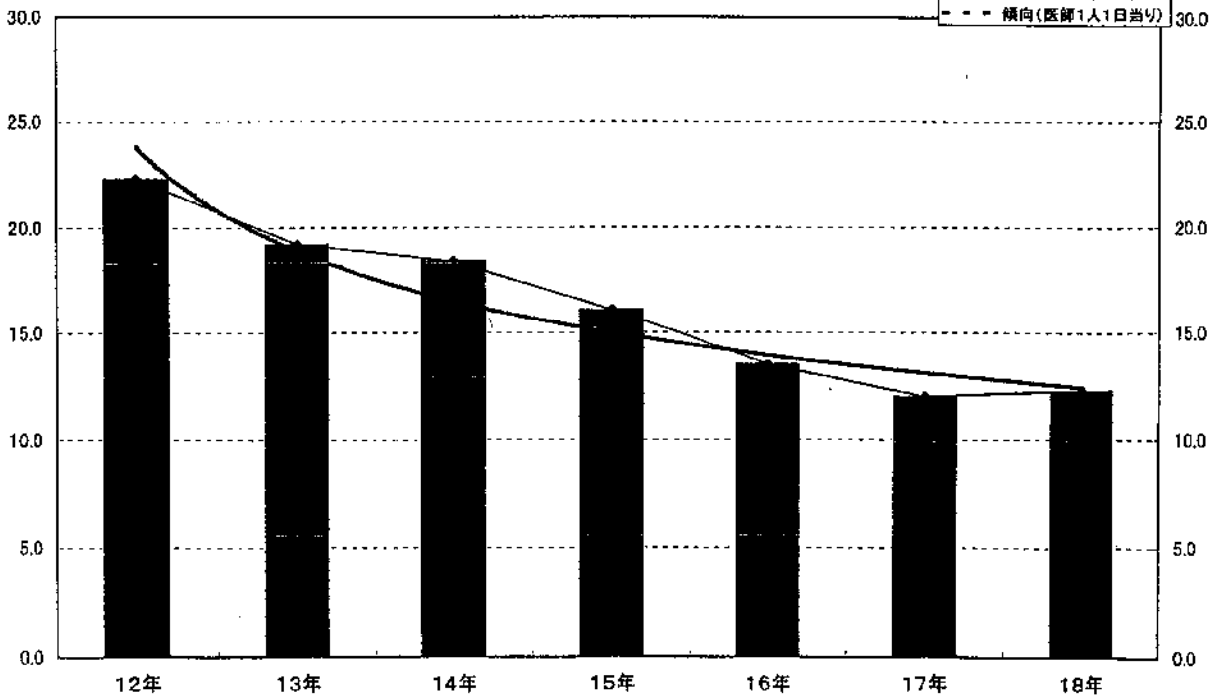
内科(外来)松代病院

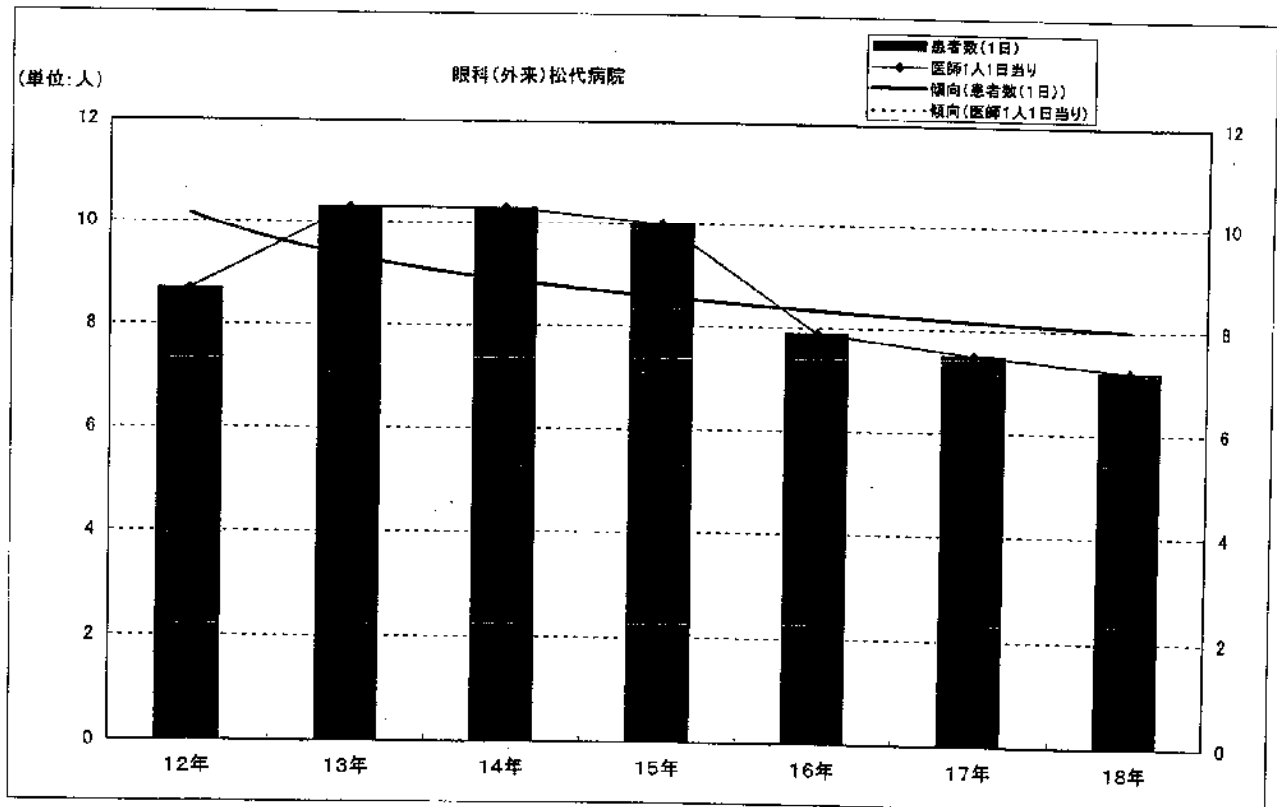
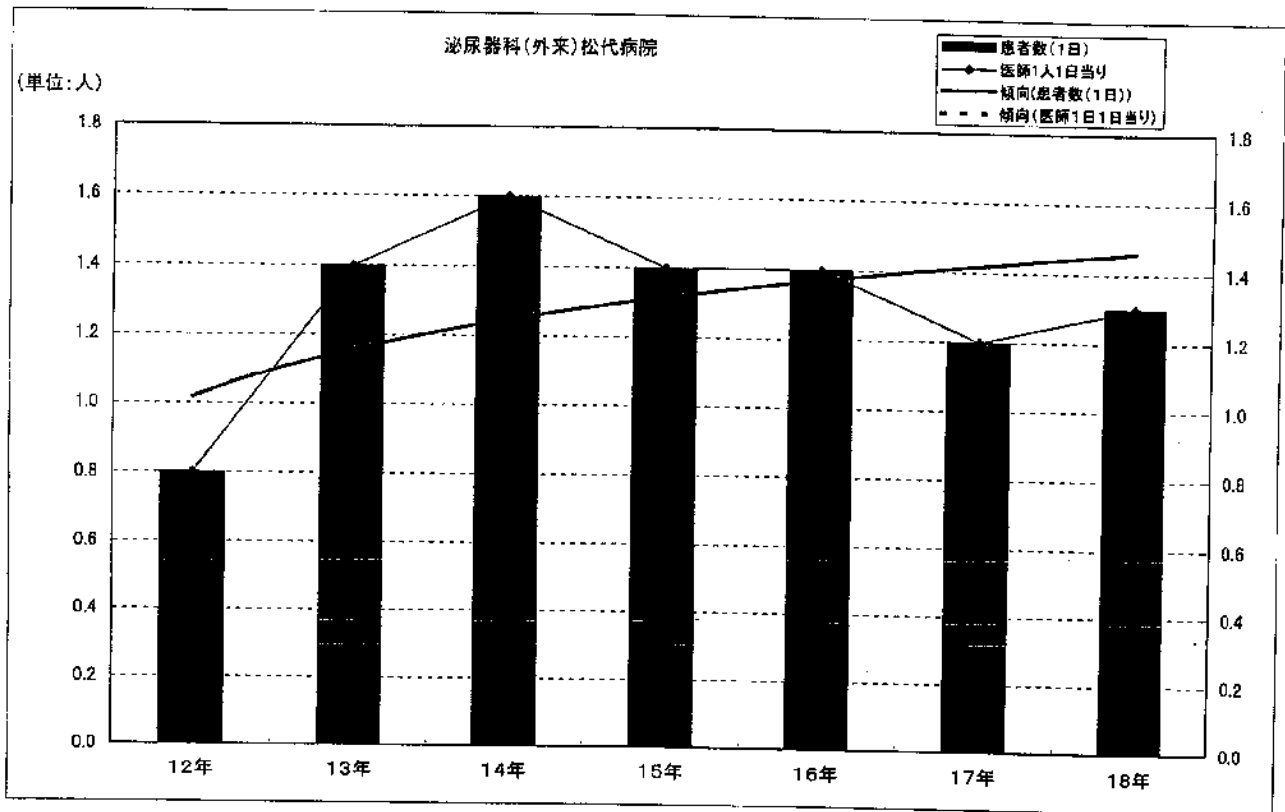
(単位:人)



整形外科(外来)松代病院

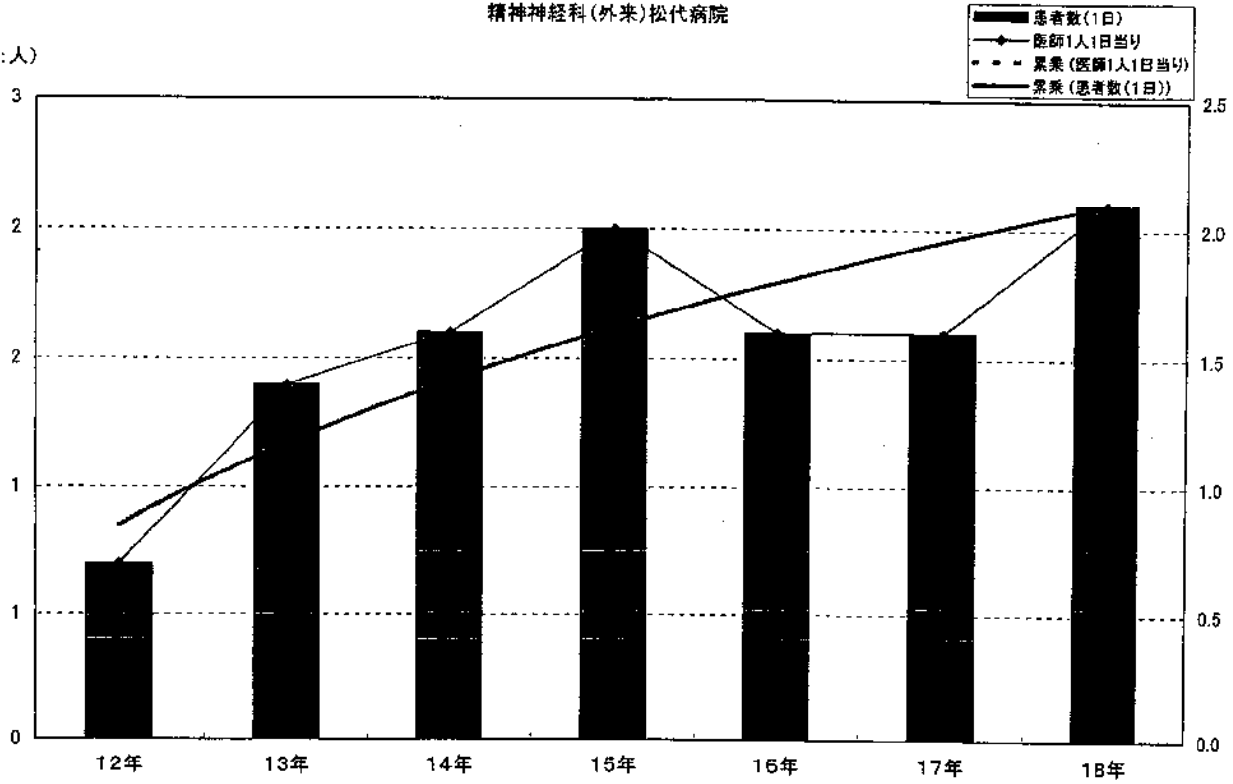
(単位:人)





精神神経科(外来)松代病院

(単位:人)



合計(外来)松代病院

(単位:人)

