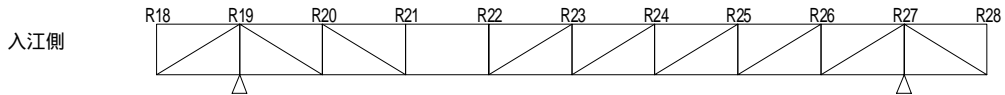
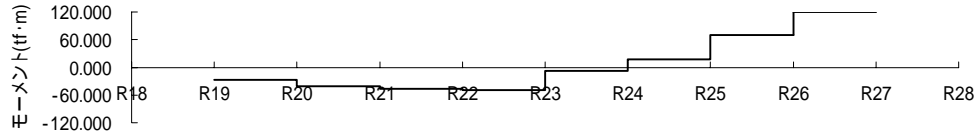


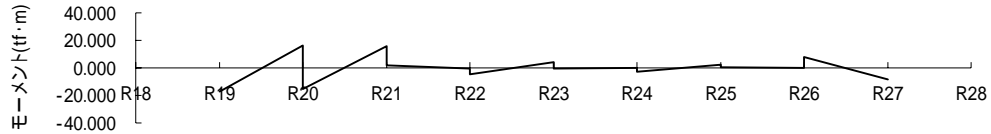
入江側R21定着部先行破壊  
 入江側 ステップ6  
 解析モデル図



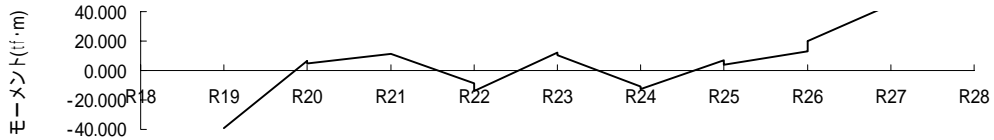
a. 軸力(上弦材)



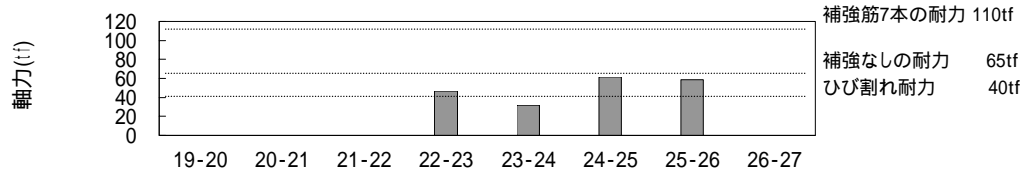
b. 曲げモーメント(上弦材)



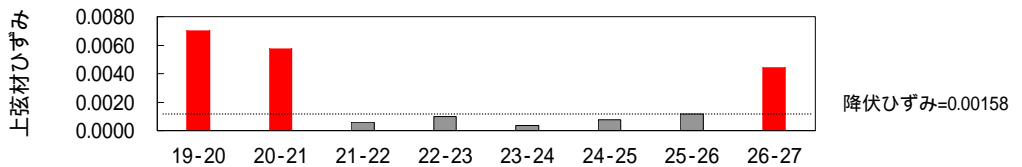
c. 曲げモーメント(床版)



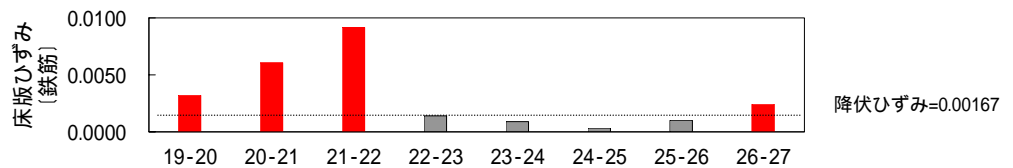
d. 斜材ロッド軸力



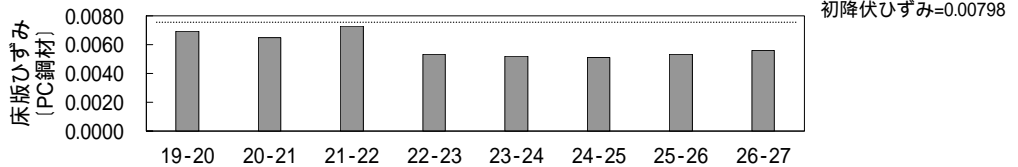
e. 上弦材ひずみ



f. 床版ひずみ(鉄筋)



g. 床版ひずみ(PC鋼材)



h. 床版ひずみ(コンクリート)

