

**Announcement
about New
Influenza A(H1N1)**

For Those With Young Children

- The currently spreading New Influenza A(H1N1) resembles the seasonal influenza that spreads every year. The initial symptoms are indistinguishable. The treatment is the same as that for seasonal flues, and the majority of patients recover from what stays a minor illness.
- Cases of young children developing encephalopathy (swelling of the brain) from fevers is present in seasonal influenza, and occurrences of encephalopathy from this New Influenza are being reported as well.

- Those who have confirmed symptoms of influenza (fever, cough, sore throat, ect.) should visit a medical institution as soon as possible.
- When visiting a medical institution, please call in advance and wear a mask when you go.



If you observe any of signs listed below in addition to influenza symptoms, please visit a medical institution immediately.

- When fevers elevate, reaction times slow and patients may not respond when called.
- Speech and conduct may be unintelligible and different.
- Will not calm down, or will not play.
- Spasms, twitching, or seizures.
- Hyperventilating or difficulty breathing.
- Facial discoloration.

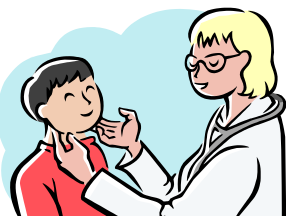


Use fever medicine with caution

- Strong fever medicines can worsen recuperation from influenza associated encephalopathy.
- If you suspect infection by influenza, refrain from using over-the-counter medicines or medicines in your home.



Consult your doctor before using fever medicines.



Issued by the Niigata Prefectural New
Influenza Prevention Task Force
Tel: 025-282-1636
Fax: 025-282-1640

For Inquiries regarding health, please call:
025-282-1640